

Part Sun Garden

Combining color and texture for a pleasing year-round display



Description

This design for a southeast-facing entrance combines different textures and shades of green for a pleasing and restful look year-round. Spring brings a splash of color, ranging from white to pink to purple.

Plant List

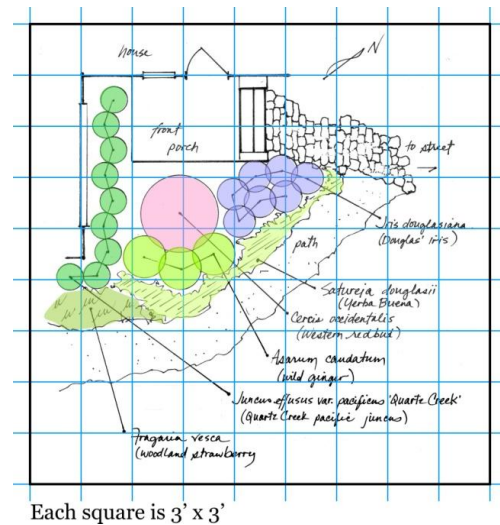
- AC Wild ginger (*Asarum caudatum*)
- CO Western redbud (*Cercis occidentalis*)
- FV Woodland strawberry (*Fragaria vesca*)
- ID Douglas iris (*Iris douglasiana*)
- JE Quartz Creek pacific rush (*Juncus effusus pacificus* 'Quartz Creek')
- YB Yerba Buena (*Satureja douglasii*)

Region

Outer coast ranges of California

Site Conditions

- Exposure: Part Sun
- Water: Occasional
- Soil: Any



Care & Maintenance

Water monthly during summer keeps the garden looking lush. Pull dry leaves of iris to promote new growth.

Credit

Indig Design, San Carlos, CA (<http://www.indigdesign.com>)