

**Parking Strip Gardens:** This information is provided freely in order to encourage homeowners to install drought-tolerant, native plants in parking strips. Keep in mind, though, that this is public property owned by your local municipality. Please check with them before making any changes. Also, there are many utility lines: water, sewage, gas, electrical, etc., which run through this area. Make sure to call the free service Underground Service Alert (USA) at 1-800-642-2444 to mark these lines in advance. Keep plants to below 3' tall and above 6' tall in order to provide automobile drivers a clear view of pedestrians on sidewalks or crossing the street.

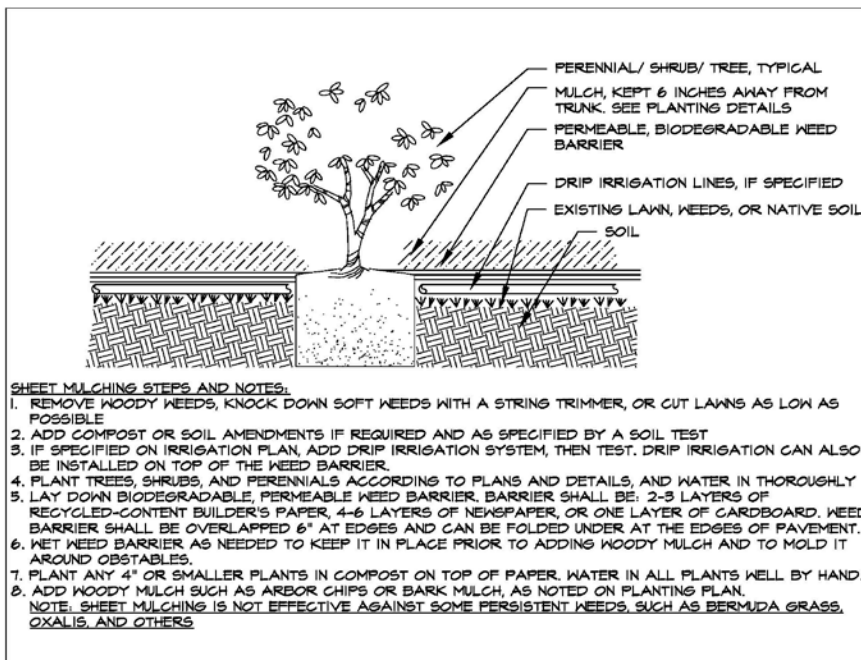
**Benefits:** Removing lawn, weeds, and/or paving benefits your garden and your community in many ways. Allowing water to soak into the soil, instead of running off into the storm water system, improves water quality. Having low-water native plants in even a small area provides habitat for local birds, bees, and butterflies. Installing plants which absorb light minimizes the urban heat island effect. Removing lawn and replacing it with drought-tolerant plants saves water. Where to buy native plants: [http://cnps.org/cnps/grownative/where\\_to\\_buy.php](http://cnps.org/cnps/grownative/where_to_buy.php)

**Rebates Available:** If you have lawn in your parking strip, you may be eligible for a rebate from your local water district. Contact them and educate yourself on their programs *before* planning or making changes. <http://www.valleywater.org/programs/rebates.aspx>, <http://bawsca.org/conservation/lawn-be-gone/>

**Irrigation:** There are at least three options to keeping your plants alive in this stressful garden area: hand watering, automatic drip, and semi-automatic drip. Hand watering is probably the easiest and cheapest option available as long as you will do it. Low-water plants are not no-water plants and will need regular water through at least the first two summers and maybe longer depending on the plants.

If you already have a spray irrigation system in your parking strip, you can change to drip using a conversion kit. If you don't have an irrigation line there, you can run one under your sidewalk. Go to your local irrigation store for more information on how to run such a line or to buy a conversion kit.

If you can't get a water line to this area, you can still create a semi-automatic drip system using a garden hose and a quick coupler. See the end of this video for more information on irrigation or go to your local irrigation store. <http://cnps-scv.org/index.php/education/presentations/262-how-i-did-it-creating-a-native-parking-strip-garden>. Bay Area irrigation stores: Horizon Distributors, Ewing Irrigation, Urban Farmer Store, and Watersavers, Inc.



**Sheet Mulching:** This is an easy way to get rid of lawn or weeds in your parking strip without removing them, while improving your soil. See the diagram on the left, then search for and watch the Bay-Friendly video on sheet mulching.

**Maintenance:** *California Native Gardening: a Month by Month Guide* by Helen Popper and *Care and Maintenance of Southern California Native Gardens* by O'Brien, Landis, and Mackey are two good references.

**Trees:** check with local organizations, such as [OurCityForest.org](http://OurCityForest.org) or [Canopy.org](http://Canopy.org), about installing a tree in your parking strip garden.

Thanks to landscape designer, Carrie Jensen, for educating us all on the importance of low-water, native parking strip gardens, and to author Evelyn Hadden for writing a book about them, *Hellstrip Gardening!*

By using this information, you agree to hold harmless and indemnify Sustainable Landscape Designs from any and all claims, demands, damages, expenses, and any other liability for injury, death, damage, loss or liability of any kind arising out of or resulting from modifying your parking strip, excepting claims arising out of willful misconduct or gross negligence.

# LOW MAINTENANCE, LOW WATER PARKING STRIP GARDEN

THIS GARDEN IS DESIGNED FOR A SIX-FOOT WIDE PARKING STRIP IN FULL SUN. THE PLANTS ARE MAINLY LOW GROWING WOODY SHRUBS THAT FLOWER AT DIFFERENT TIMES OF THE YEAR AND YET TAKE LITTLE TO NO MAINTENANCE.

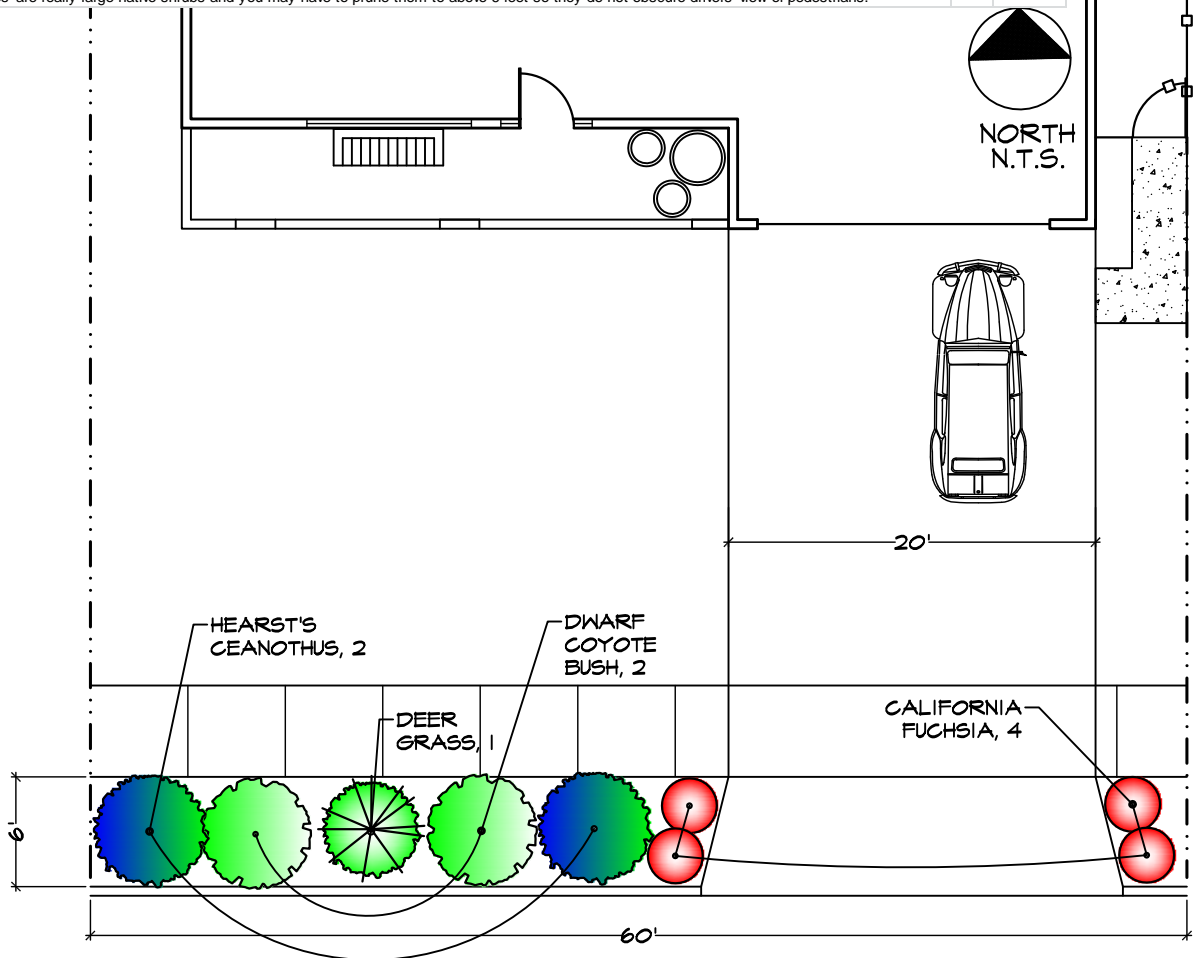
## PLANT LEGEND

SYMBOL	BOTANICAL NAME	COMMON NAME	SIZE	QTY	WATER	SIZE (TXW)	SCV WD	SF
LOW MAINTENANCE, LOW WATER PARKING STRIP PLANTS								
<b>SHRUBS</b>								
BAC PIL	BACCHARIS PILULARIS 'TWIN PEAKS II'	DWARF COYOTE BRUSH	1 GAL	2	L	NATIVE, 2-3' X 8'	Y	28
CEA HEA	CEANOTHUS HEARSTIORUM	HEARST'S CEANOTHUS	1 GAL	2	L	NATIVE, 1'X6'	Y	*
<b>PERENNIALS</b>								
EPI SEP	EPILOBIUM SEPTENTRIONALIS 'SELECT MATTOLE'	CALIFORNIA FUCHSIA	1 GAL	4	L	NATIVE, 1' x 3'	N	
MUH RIG	MUHLENBERGIA RIGENS	DEER GRASS	1 GAL	1	L	NATIVE, 3' X 4'	Y	13
TOTAL				9				

## SUGGESTED TREES, IF DESIRED

SYMBOL	BOTANICAL NAME	COMMON NAME	SIZE	QTY	WATER	SIZE (TXW)	SCV WD	SF
<b>TREES</b>								
ACE MAC	ACER MACROPHYLLUM	BIG LEAF MAPLE	15 GAL		L	NATIVE, 40' X 25'	Y	NA
ARC DRH	ARCTOSTAPHYLOS 'DR. HURD'	MANZANITA	5 GAL		VL	NATIVE, 12X12'	Y	79
CEA RAY	CEANOTHUS 'RAY HARTMAN'	WILD LILAC	5 GAL		L	NATIVE, 10-20'	Y	*
CEA SNO	CEANOTHUS THYRSIFLORUS 'SNOW FLURRY'	WILD LILAC	5 GAL		L	NATIVE, 10X12'	Y	*
CER OCC	CERCIS OCCIDENTALIS	WESTERN REDBUD	5 GAL		VL	NATIVE; 15' x 10'	Y	79
CER BET	CERCOCARPUS BETULOIDES	WESTERN MTN MAHOGANY	5 GAL		L	NATIVE; 15' x 10'	Y	57
GAR ELL	GARRYA ELLIPTICA	COAST SILK TASSEL	5 GAL		L	NATIVE, 12' TXW	Y	95
HET ARB	HETEROMELES ARBUTIFOLIA	TOYON	5 GAL		VL	L NATIVE; 15' x 10'	Y	79
PRU ILLI	PRUNUS ILLICIFOLIA	HOLLYLEAF CHERRY	5 GAL		L	NATIVE, 20X10'	Y	177
QUE AGR	QUERCUS AGRIFOLIA	COAST LIVE OAK	15 GAL		VL	L NATIVE, 30' X 30'	Y	NA
QUE DOU	QUERCUS DOUGLASII	BLUE OAK	15 GAL		VL	L NATIVE, 30' X 30'	Y	NA

Some of these smaller 'trees' are really large native shrubs and you may have to prune them to above 6 feet so they do not obscure drivers' view of pedestrians.



Sheet 1

**CALIFORNIA NATIVE PLANT SOCIETY**  
 SANTA CLARA VALLEY CHAPTER  
 PARKING STRIP GARDEN - LOW MAINTENANCE

Date	Description	Job No.	Drawn	Checked
12.Feb.18	DRAFT A			
9.Mar.18	DRAFT B			
17.Mar.18	FINAL			

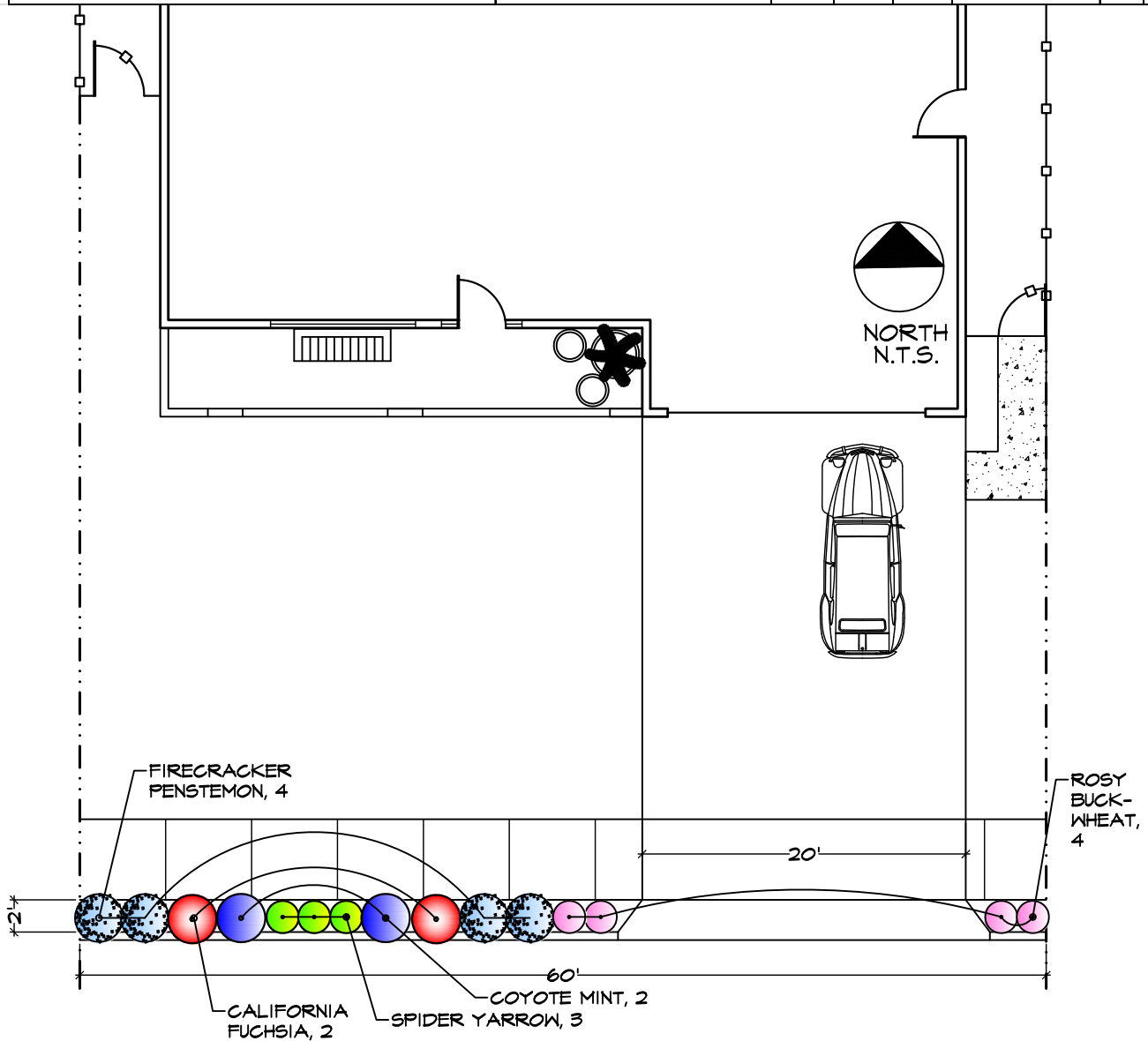
SUSTAINABLE  
 LANDSCAPE DESIGNS  
 PO BOX 6555  
 SAN JOSE, CA  
 95150-6555  
 (408) 264-7421  
 WWW.SUSTAINABLE-  
 LANDSCAPE.COM

# HUMMINGBIRD & BUTTERFLY MAGNET

THIS TWO-FOOT WIDE PARKING STRIP GARDEN IS DESIGNED TO ATTRACT HUMMINGBIRDS AND BUTTERFLIES IN A FULL SUN SPOT. THE PLANTS BLOOM AT DIFFERENT TIMES OF THE YEAR, BRINGING WILDLIFE INTO THE GARDEN. THEY ARE LOW WATER AND LOW MAINTENANCE, DEADHEADING THE FLOWERS AND MINOR PRUNING AFTER BLOOM IS ALL THAT IS NEEDED.

## PLANT LEGEND

SYMBOL	BOTANICAL NAME	COMMON NAME	SIZE	QTY	WATER	SIZE (TXW)	SCV WD	SF
HUMMINGBIRD AND BUTTERFLY MAGNET - PARKING STRIP PLANTS								
<b>PERENNIALS</b>								
EPI SIE	<i>EPILOBIUM CANUM 'SIERRA SALMON'</i>	CALIFORNIA FUCHSIA	1 GAL	2	L	NATIVE, 1'X2'	Y	*
ERI GRA	<i>ERIOGONUM GRANDE VAR. RUBESCENS</i>	ROSY BUCKWHEAT	1 GAL	4	L	NATIVE, 2'X2'	Y	*
ERI ARA	<i>ERIOPHYLLUM LANATUM V. ARACHNOIDEUM</i>	SPIDER YARROW	1 GAL	3	L	NATIVE, 1'X2'	Y	1
MON VIL	<i>MONARDELLA VILLOSA</i>	COYOTE MINT	1 GAL	2	VL	NATIVE, 2'X2'	Y	3
PEN EAT	<i>PENSTEMON EATONII</i>	FIRECRACKER PENSTEMON	1 GAL	4	L	NATIVE, 3' X 2'	Y	*
<b>TOTAL</b>					15			



## CALIFORNIA NATIVE PLANT SOCIETY

SANTA CLARA VALLEY CHAPTER

PARKING STRIP GARDEN - HUMMINGBIRD & BUTTERFLY MAGNET

Date	Description
12 Feb. 15	DRAFT A
5 Mar. 15	DRAFT B
11 Mar. 15	FINAL

Scale: \_\_\_\_\_  
 Date: \_\_\_\_\_  
 Drawn: \_\_\_\_\_

SUSTAINABLE  
 LANDSCAPE DESIGNS  
 PO BOX 6335  
 SAN JOSE, CA  
 95150-6335  
 (408) 264-7427  
 WWW.SUSTAINABLE-  
 LANDSCAPE.COM

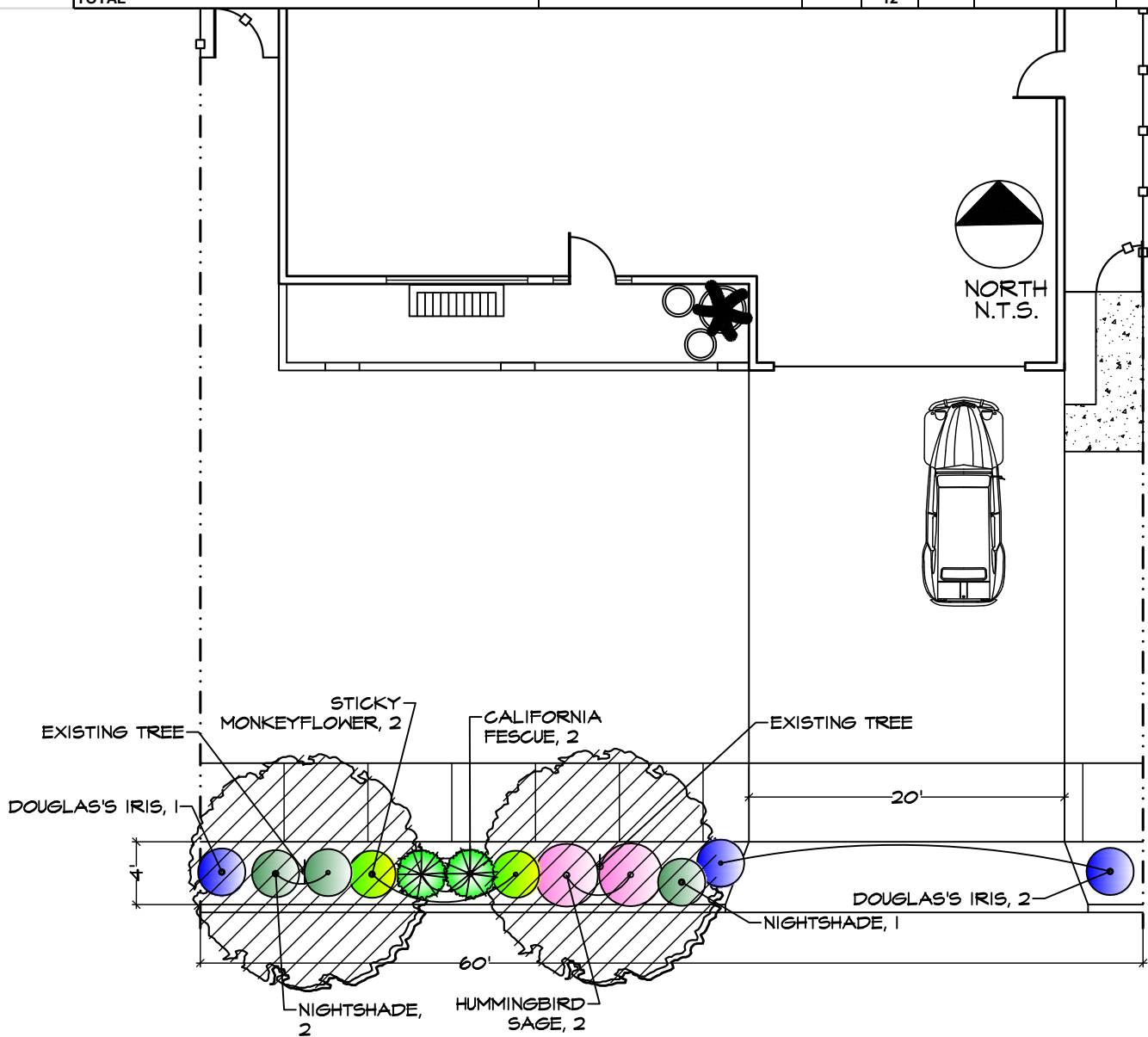
Sheet  
 L2

# SHADE GARDEN FOR PARKING STRIPS

THIS GARDEN IS DESIGNED FOR A FOUR-FOOT WIDE PARKING STRIP UNDER THE SHADE OF ESTABLISHED STREET TREE(S). ALL THE PLANTS ARE LOW-WATER PERENNIALS AND BLOOM AT DIFFERENT TIMES OF THE YEAR FOR LOTS OF VISUAL INTEREST.

## PLANT LEGEND

SYMBOL	BOTANICAL NAME	COMMON NAME	SIZE	QTY	WATER	SIZE (TXW)	SCV	WD	SF
SHADE GARDEN - PARKING STRIP PLANTS									
<b>PERENNIALS</b>									
FES CAL	<i>FESTUCA CALIFORNICA</i>	CALIFORNIA FESCUE	1 GAL	2	L	L NATIVE, 3' X 3'	Y		1
SOL XAN	<i>SOLANUM XANTII</i>	NIGHTSHADE	1 GAL	3	L	NATIVE, 2'X3'	Y		7
IRI DOU	<i>IRIS DOUGLASIANA</i>	DOUGLAS' IRIS	1 GAL	3	L	NATIVE, 1'X3'	Y		*
MIM AUR	<i>DIPLACUS (MIMULUS) AURANTIACUS</i>	STICKY MONKEYFLOWER	1 GAL	2	L	L NATIVE, 3'X3'	Y		*
SAL SPA	<i>SALVIA SPATHACEA</i>	HUMMINGBIRD SAGE	1 GAL	2	L	NATIVE, 2'X4'	Y		*
<b>TOTAL</b>				<b>12</b>					



**CALIFORNIA NATIVE PLANT SOCIETY**  
 SANTA CLARA VALLEY CHAPTER  
 PARKING STRIP GARDEN - SHADE

Date	Description
12.Feb.15	DRAFT A
5.Mar.15	DRAFT B
11.Mar.15	FINAL

PROJECT DATE: \_\_\_\_\_  
 DRAWN BY: \_\_\_\_\_  
 CHECKED BY: \_\_\_\_\_

SUSTAINABLE  
 LANDSCAPE DESIGNS  
 PO BOX 6335  
 SAN JOSE, CA  
 95150-6335  
 (408) 264-7427  
 WWW.SUSTAINABLE-  
 LANDSCAPE.COM

Sheet  
 13