

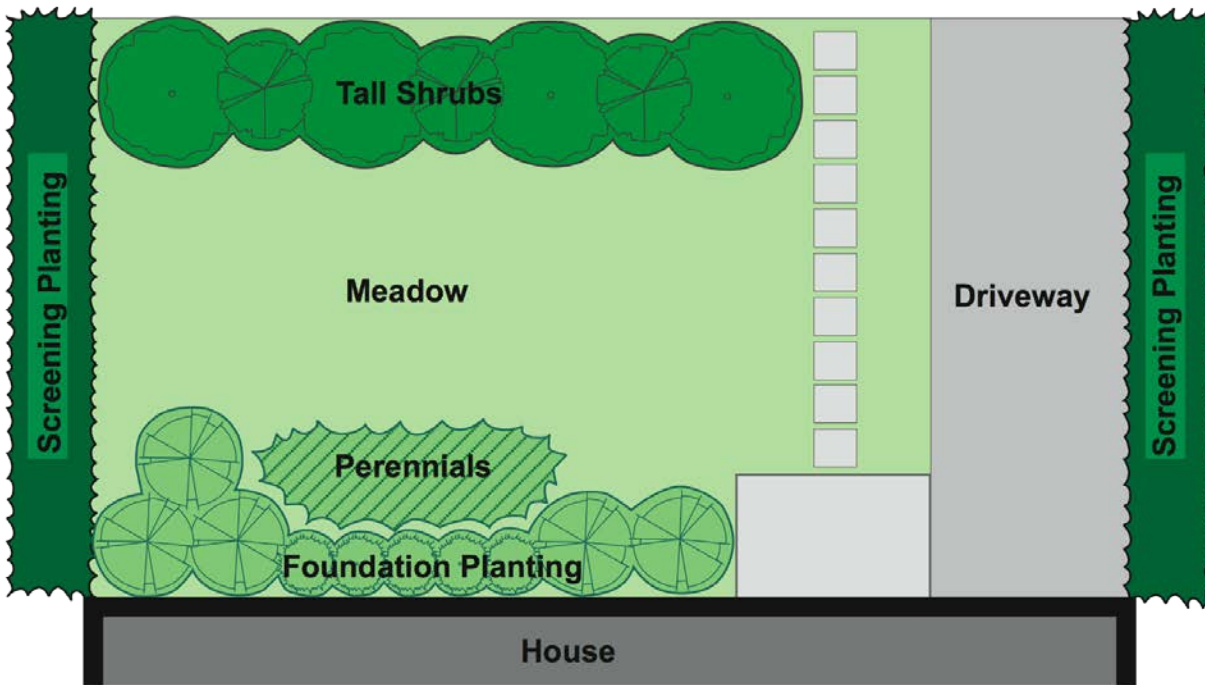
The **Acterra Stewardship Native Plant Nursery** has developed two conceptual layouts for typical suburban landscapes – one is for a flat lot and the other for a hillside or sloping lot. The layouts provided here are conceptual, and it is expected that your own yard will look a little different. These concepts show some typical garden needs, e.g., screening for privacy, plants to soften a foundation and plants that can tolerate shade. In addition, we have replaced the typical suburban lawn with a meadow that uses native grasses and some other low plants. These meadows serve as the same aesthetic function as a lawn – to provide some open vistas of green expanse, and they can also support some moderate amount of foot traffic.

**Conceptual Design Flat Landscape**

This layout provides native plant alternatives for traditional landscaping needs for a flat lot.

Most of the recommended plants are clay tolerant. Some of the assumptions for this layout are:

- Lot is generally flat, \* Some degree of clay in soil, i.e., there is may notbe good drainage on site \* Range of exposures, but mainly sunny in the middle, \* Recommended plants are local to the San Francisco Bay area

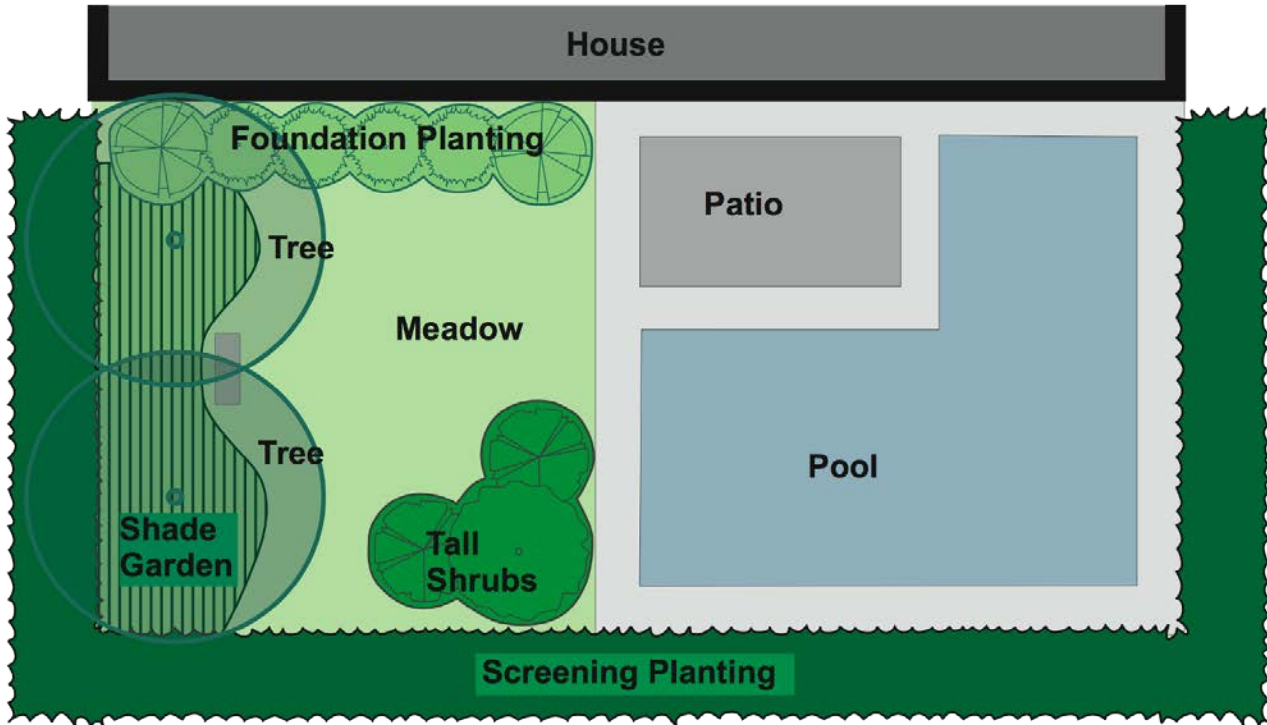


**Front Garden**

**Suggested Plants for Conceptual Design Flat Landscape**

Area	Botanical Name	Common Name	Exposure
Meadow	<i>Festuca rubra</i>	Red Fescue	Sun, part shade
	<i>Carex praegracilis</i>	Meadow Sedge	Sun, part shade
	<i>Iris douglasii</i>	Douglas Iris	Sun, part shade, shade
	<i>Sidalcea malviflora</i>	Checkerbloom	Sun, part shade
	<i>Verbena lasiostachys</i>	Robust Verbena	Sun, part shade
Perennials	<i>Aster chilensis</i>	Chilean Aster	Sun, part shade
	<i>Erigeron glaucus</i>	Seaside Daisy	Sun, part shade
	<i>Heterotheca sessiliflora</i>	Golden Aster	Sun, part shade
	<i>Penstemon heterophyllus</i>	Foothill Penstemon	Sun, part shade
	<i>Phacelia bolanderi</i>	Bolander's Phacelia	Part shade
	<i>Ranunculus californicus</i>	CA Buttercups	Sun, part shade
	<i>Salvia sonomensis, S. spathacea</i>	Creeping, Hummingbird Sage	Sun, shade

## Back Garden



### Suggested Plants for Flat Landscapes, continued

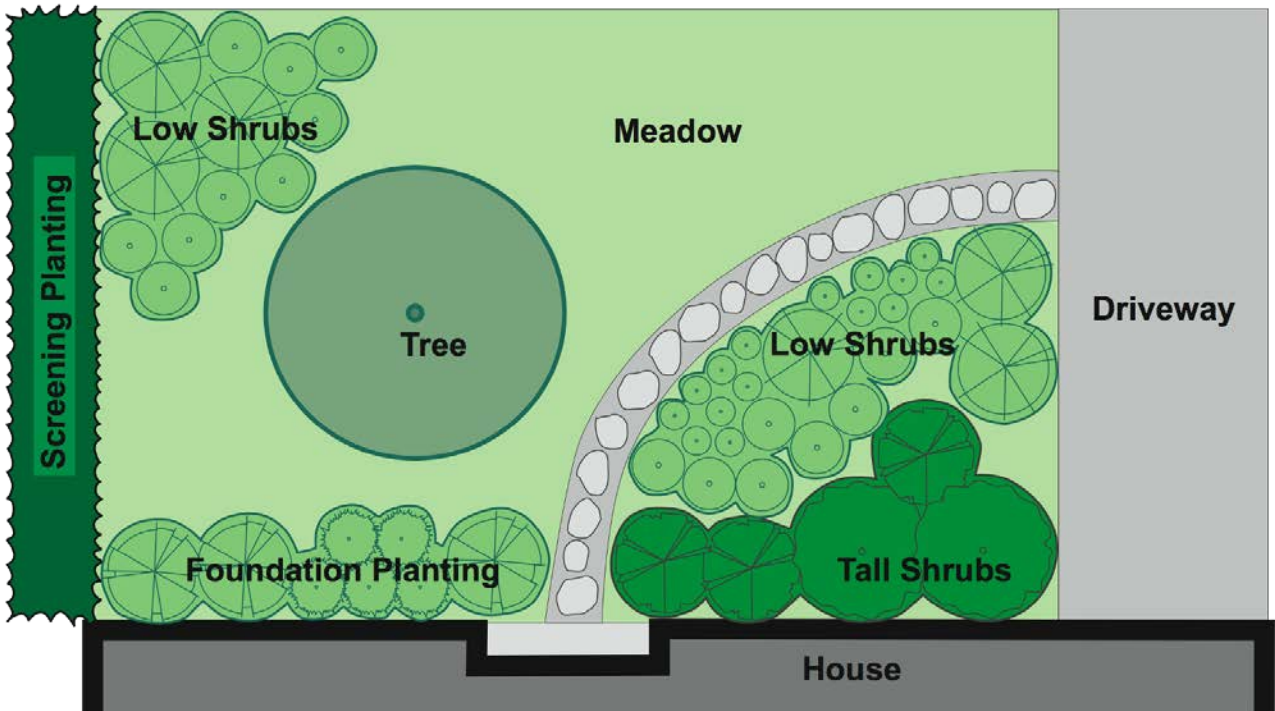
Area	Botanical Name	Common Name	Exposure
Tree/Tall Shrubs	<i>Aesculus californica</i>	CA Buckeye	Sun, part shade
	<i>Cercis occidentalis</i>	Western Redbud	Sun, part shade
	<i>Quercus agrifolia</i>	Coast Live Oak	Sun, part shade
	<i>Quercus lobata</i>	Valley Oak	Sun, part shade
	<i>Sambucus mexicana</i>	Blue Elderberry	Sun, part shade
	<i>Ribes sanguineum</i>	Flowering Currant	Part shade
	<i>Holodiscus discolor</i>	Cream Bush	Part shade
Foundation Plants	<i>Gaultheria shallon</i>	Salal	Part shade, shade
	<i>Physocarpus capitatus</i>	Ninebark	Part shade, shade
	<i>Rhus integrifolia</i>	Lemonadeberry	Sun, part shade
	<i>Symphoricarpos mollis</i>	Common Snowberry	Part shade, shade
	<i>Vaccinium ovatum</i>	Huckleberry	Part shade, shade
Screening Plants	<i>Garrya elliptica</i>	Coast Silktassel	Sun, part shade, shade
	<i>Heteromeles arbutifolia</i>	Toyon	Sun, part shade, shade
	<i>Myrica californica</i>	CA Wax Myrtle	Sun, part shade, shade
	<i>Rhamnus californica</i>	Coffeeberry	Sun, part shade, shade
	<i>Prunus ilicifolia</i>	Hollyleaf Cherry	Sun, part shade
Shade Garden	<i>Woodwardia fimbriata</i>	Giant Chain Fern	Shade
	<i>Aquilegia formosa</i>	Columbine	Part shade
	<i>Dicentra formosa</i>	Western Bleeding Heart	Shade
	<i>Fragaria vesca</i>	Woodland Strawberry	Shade
	<i>Heuchera micrantha</i>	Alumroot	Part shade, shade
	<i>Tellima grandiflora</i>	Fringe Cup	Shade
	<i>Tolmiea menziesii</i>	Piggyback Plant	Part shade, shade

### Conceptual Design Hillside Landscape

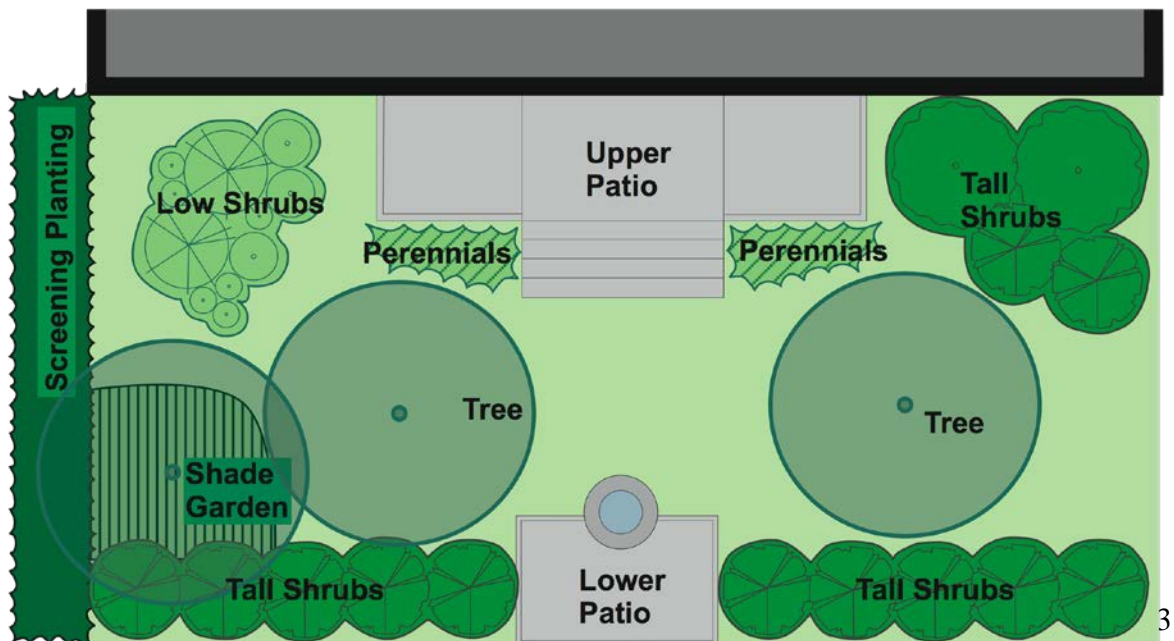
This layout provides native plant alternatives for traditional landscaping needs on a hillside or sloping lot. Some of the assumptions for this layout are:

- Hillside lot or some slope \* Better drainage of soil \* Range of exposures, but mainly sunny in the middle\* Recommended plants are local to the San Francisco Bay Area \* Many of the recommended plants are native to the coastal sage scrub community.

#### Front Garden



#### Back Garden



## Suggested Plants for Conceptual Design Hillside Landscape

Area	Botanical Name	Common Name	Exposure
Meadow	<i>Nassella lepida</i> , <i>N. pulchra</i>	Foothill Needlegrass, Purple Needlegrass	Sun, part shade
	<i>Festuca idahoensis</i>	Idaho Fescue	Sun, part shade
	<i>Dichelostemma capitatum</i>	Blue Dick	Sun
Perennials	<i>Eriophyllum confertiflorum</i>	Golden Yarrow	Sun
	<i>Epilobium canum</i>	CA Fuchsia	Sun
	<i>Monardella villosa</i>	Coyote Mint	Sun
Low Shrubs	<i>Phacelia californica</i>	California Phacelia	Sun, part shade
	<i>Salvia apiana</i>	White Sage	Sun
	<i>Lepechinia calycina</i>	Pitcher Sage	Sun, part shade
	<i>Arctostaphylos crustacea</i>	Brittle Leaf Manzanita	Sun
	<i>Eriogonum fasciculatum</i>	California Buckwheat	Sun
	<i>Keckiella cordifolia</i>	Climbing Penstemon	Sun, part shade
	<i>Ribes malvaceum</i>	Chaparral Currant	Sun, part shade
	<i>Salvia mellifera</i>	Black Sage	Sun
	Tree/ Tall Shrubs	<i>Ceanothus thyrsiflorus</i>	Blue Blossom
<i>Quercus douglasii</i>		Blue Oak	Sun, part shade
<i>Cercocarpus betuloides</i>		Mountain Mahogany	Sun, part shade
<i>Prunus ilicifolia</i>		Hollyleaf Cherry	Sun, part shade
Screening Plants	<i>Garrya elliptica</i>	Coast Silktassel	Sun, part shade, shade
	<i>Heteromeles arbutifolia</i>	Toyon	Sun, part shade, shade
	<i>Rhamnus californica</i>	Coffeeberry	Sun, part shade, shade
Shade Garden	<i>Lupinus albifrons</i>	Bush Lupine	Part shade
	<i>Iris fernaldii</i>	Fernald's Iris	Shade
	<i>Phacelia bolanderi</i>	Bolander's Phacelia	Part shade
	<i>Satureja douglassii</i>	Yerba Buena	Part shade, shade
	<i>Dodecatheon hendersonii</i>	Shooting Star	Part shade
Foundation Plants	<i>Rhamnus californica</i> , <i>R. crocea</i>	Coffeeberry, Redberry	Sun, part shade, shade
	<i>Rhus integrifolia</i>	Lemonadeberry	Sun, part shade
	<i>Artemisia californica</i>	California Sagebrush	Sun