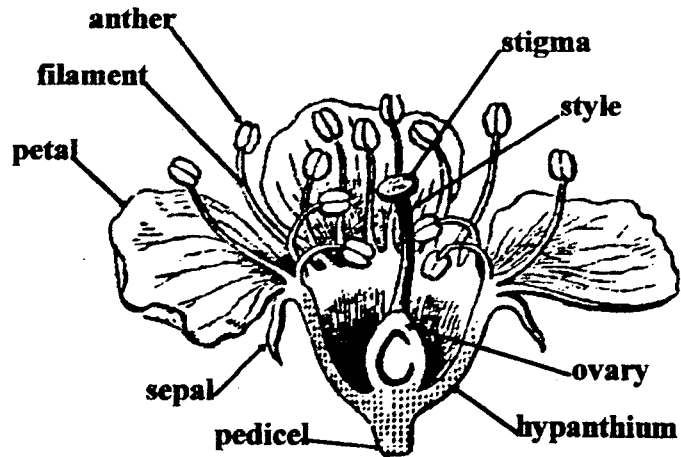


Simple Leaf



Half of a Cherry Blossom

### BOTANICAL TERMS

(Illustrations of leaf and flower from *How Plants Grow* by Asa Gray 1858)

**anther:** pollen-forming portion of a stamen

**blade:** expanded portion of a leaf

**calyx (calyces):** collective term for sepals; outermost or lowermost whorl of flower parts, generally green. Sometimes the same as the corolla.

**corolla:** collective term for petals; whorl of flower parts immediately inside or above calyx, often large and brightly colored. Sometimes the same as the calyx.

**filament:** anther-stalk.

**hypanthium:** structure derived from the fused lower portions of sepals, petals and stamens.

**midrib:** central, thick, laminar structure that runs the length of a leaf.

**ovary:** ovule-bearing portion of pistil. Normally develops into fruit with ovules becoming seeds. Ovule is a structure containing an egg.

**pedicel:** stalk of an individual flower or fruit.

**petal:** individual member of the corolla, whether fused or not. Often brightly colored.

**petiole:** leaf stalk, connecting leaf blade to stem.

**pistil:** female reproductive structure of a flower, composed of an ovule-containing ovary at the base, one or more pollen-receiving stigmas at the tip and generally one or more styles between ovary and stigma.

**sepal:** individual member of the calyx, whether fused or not, generally green.

**stamen:** male reproductive structure of a flower, usually composed of a stalk-like filament and a terminal, pollen-producing anther.

**stigma:** the part of the pistil on which pollen is normally deposited.

**stipule:** appendage at base of petiole.

**style:** stalk-like structure connecting stigma to ovary.

**vein:** tissue specialized for transport of substances within a plant.

# **CALIFORNIA NATIVE PLANT SOCIETY**

## **LEAF & FLOWER WORD SEARCH**

A	P	E	T	I	O	L	E	L	U	V	O
P	R	E	W	O	L	F	A	E	L	Q	M
A	C	L	T	V	M	I	D	R	I	B	C
M	J	A	K	A	U	L	B	E	L	L	O
G	X	P	L	R	L	A	C	A	E	O	R
I	A	E	L	Y	J	M	D	F	Q	S	O
T	N	S	V	A	X	E	L	Y	T	S	L
S	T	A	M	E	N	N	I	E	V	O	L
G	H	Y	P	A	N	T	H	I	U	M	A
P	E	D	I	C	E	L	I	T	S	I	P
U	R	Q	V	E	L	U	P	I	T	S	A

**CAN YOU FIND THESE LEAF & FLOWER TERMS?**

ANTHER

BLADE

BLOSSOM

CALYX

COROLLA

FILAMENT

FLOWER

HYPANTHIUM

LEAF

MIDRIB

OVARY

OVULE

PEDICEL

PETAL

PETIOLE

PISTIL

PLANT

SEED

SEPAL

STAMEN

STIGMA

STIPULE

STYLE

VEIN