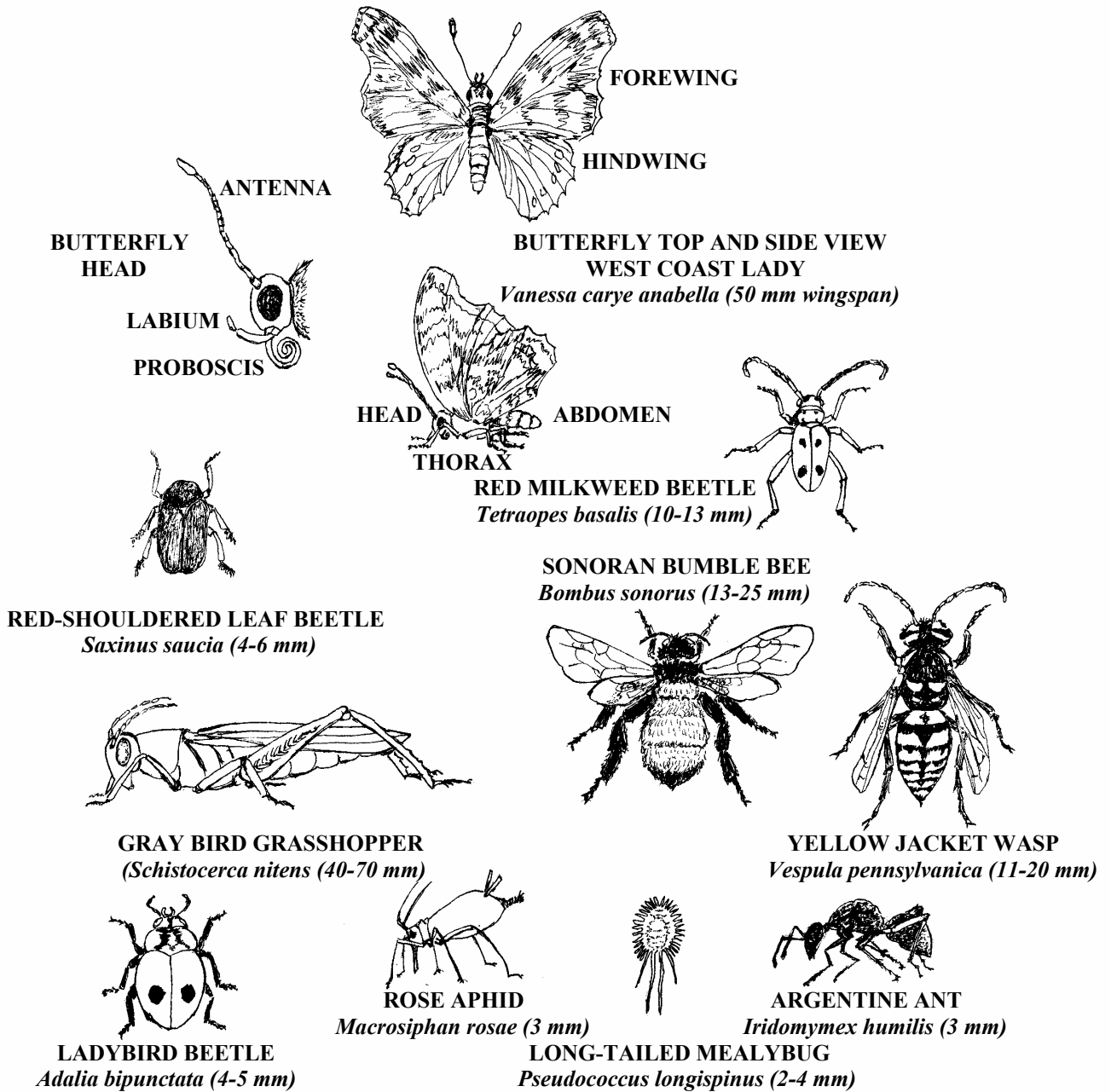


COMMON TYPES OF INSECTS FOUND ON PLANTS

Not drawn to scale. Body length (or butterfly wingspan) given in millimeters.
Slugs, snails (mollusks) and spiders (arachnids) are not insects.



Information from *California Insects* by Jerry A. Powell & Charles L. Hogue, 1979, U.C. Press, and *Insects of the Los Angeles Basin* by Charles L. Hogue, 1993, Natural History Museum of Los Angeles County. Sketches of insects from *Southern California Native Plants for School and Urban Gardens* by Betsey Landis.

CALIFORNIA NATIVE PLANT SOCIETY

BUTTERFLIES & OTHER PLANT-LOVING INSECTS

T	D	O	G	F	A	C	E	C	A	T	E	R	P	I	L	L	A	R
O	X	P	M	J	T	N	A	E	N	I	T	N	E	G	R	A	E	O
P	F	N	I	Q	H	E	L	T	E	E	B	F	A	E	L	P	B	M
S	M	I	L	K	W	E	E	D	B	E	E	T	L	E	P	S	U	B
R	F	E	R	J	R	B	A	L	H	C	R	A	N	O	M	A	T	K
E	R	G	A	O	P	A	U	D	X	A	R	O	H	T	D	W	T	A
K	I	N	N	L	S	E	M	Q	J	K	V	S	M	K	F	T	E	O
C	T	I	T	X	Y	E	B	L	P	B	S	K	I	P	D	E	R	L
E	I	W	E	B	L	B	A	Z	A	A	B	N	J	Z	R	K	F	C
H	L	Y	N	U	M	N	U	P	R	T	D	P	M	Q	I	C	L	G
C	L	K	N	M	U	V	E	G	H	F	E	M	U	J	B	A	Y	N
H	A	S	A	B	Q	G	D	M	Q	I	K	M	I	F	Y	J	S	I
I	R	U	F	L	K	R	P	N	O	K	D	N	B	R	D	W	K	N
N	Y	D	X	E	I	B	L	U	E	D	Z	E	A	J	A	O	I	R
D	P	R	O	B	O	S	C	I	S	P	B	B	L	O	L	L	P	U
W	K	B	Y	E	R	I	N	G	L	E	T	A	V	R	A	L	P	O
I	P	A	E	E	K	C	H	R	Y	S	A	L	I	S	I	E	E	M
N	R	W	E	S	T	C	O	A	S	T	L	A	D	Y	B	Y	R	D
G	N	I	W	E	R	O	F	L	I	A	T	W	O	L	L	A	W	S

CAN YOU FIND THESE BUTTERFLY & INSECT NAMES & TERMS?

- | | |
|---|--|
| <p>ABDOMEN
ADMIRAL
ANTENNA
ARGENTINE ANT
BLUE
BUMBLEBEE
BUTTERFLY
CATERPILLAR
CHECKERSPOT
CHRYSLIS
DOGFACE
DUSKYWING
FOREWING
FRITILLARY
GRAY BIRD GRASSHOPPER
HEAD
HIND WING</p> | <p>LABIUM
LADYBIRD
LARVA
LEAF BEETLE
MEALYBUG
METALMARK
MILKWEED BEETLE
MONARCH
MOURNING CLOAK
PROBOSCIS
RINGLET
ROSE APHID
SKIPPER
SWALLOWTAIL
THORAX
WEST COAST LADY
YELLOWJACKET WASP</p> |
|---|--|