

CALIFORNIA NATIVE PLANT SOCIETY

GRASS WORD SEARCH

| | | | | | | | | | | |
|---|---|---|---|---|---|---|---|---|---|---|
| G | R | A | I | N | P | A | E | L | A | P |
| B | R | D | W | E | M | O | Z | I | H | R |
| R | N | A | U | R | I | C | L | E | U | S |
| A | O | Z | S | P | I | K | E | L | E | T |
| C | D | M | T | S | M | W | E | C | Q | E |
| T | E | R | O | L | F | V | H | W | L | M |
| E | M | U | L | G | R | A | O | E | I | L |
| L | L | C | O | E | F | Q | M | X | G | U |
| A | P | G | N | F | J | M | G | I | U | C |
| C | N | I | H | T | A | E | H | S | L | U |
| S | B | R | I | S | T | L | E | G | E | Y |

FIND THE FOLLOWING GRASS WORDS IN THE PUZZLE:

AURICLE
AWN
BRACT
BRISTLE
CHAFF
CULM
FLORET
GLUME
GRAIN
GRASS FAMILY

LEMMA
LIGULE
NERVE
NODE
PALEA
RHIZOME
SCALE
SHEATH
SPIKELET
STEM
STOLON

BOTANICAL TERMS FOR GRASSES

auricle: ear-like structures extending from the lower end of the leaf blade.

awn: a bristle on the bracts or scales, usually an extension of a nerve.

bract: modified, reduced leaves located above the foliage leaves.

bristle: a stiff hair-like structure.

chaff: a thin dry scale or bract.

culm: specialized stem of grass.

floret: unit usually of two bracts (lemma and palea) enclosing a flower.

glume: a chaff-like bract.

grain: a swollen, seed-like structure.

grass family: the most economically important family of plants. Annual herbs to woody, hollow-stemmed plants like bamboo or cane.

lemma: lower of two bracts enclosing a flower above the glumes.

ligule: collar-like structure at junction of leaf blade and leaf sheath.

nerve: vascular strand of glume, lemma or leaf.

node: where the leaves arise from the stem.

palea: inner of the two bracts, directly below the grass flower.

rhizome: a prostrate elongated culm growing mostly underground, usually rooting at nodes and upturned at apex.

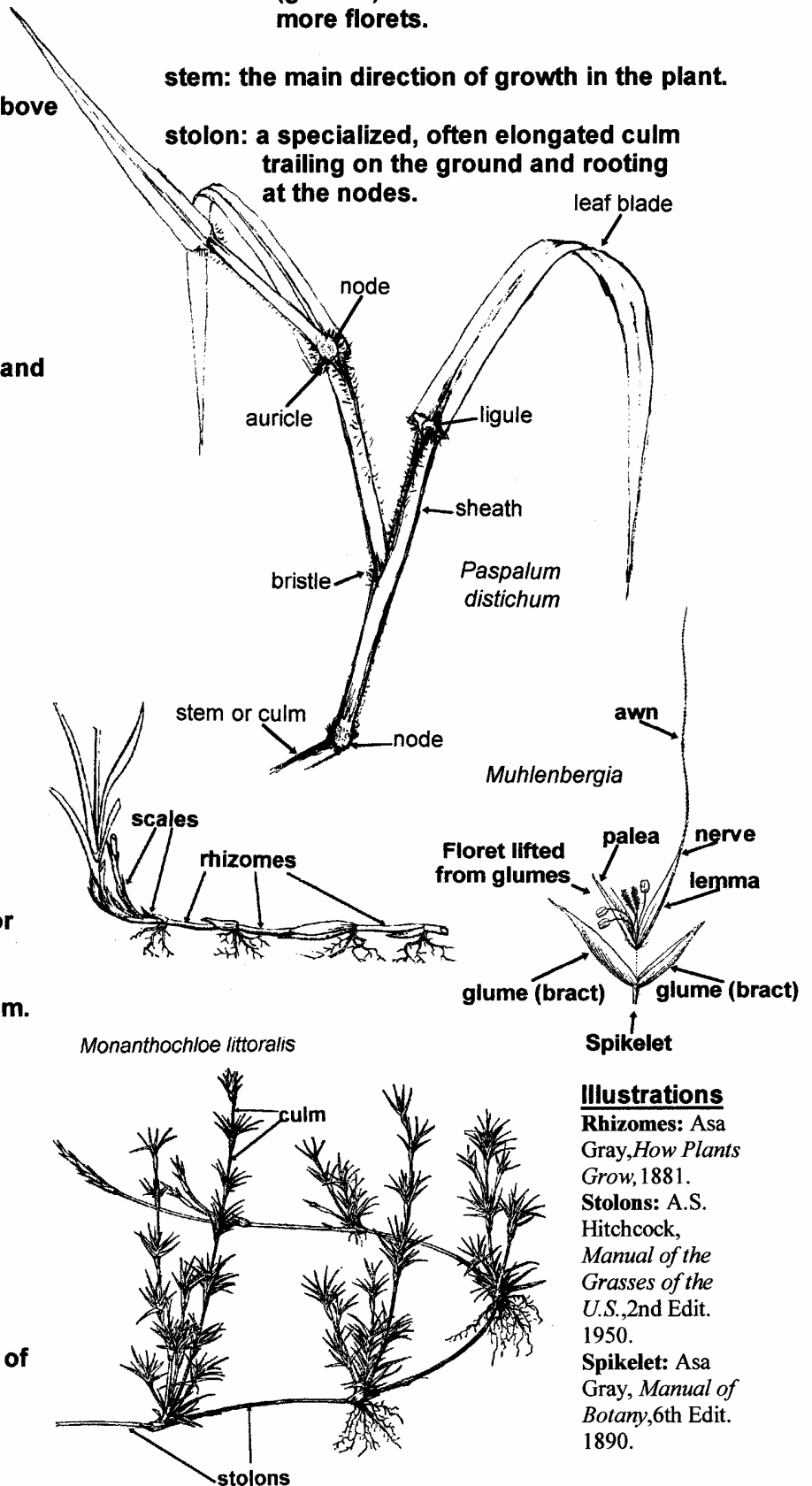
scale: a small dry bract.

sheath: part of leaf that covers all or part of a culm.

spikelet: in a panicle or flower spike, a unit usually of two empty bracts (glumes) at the base of one or more florets.

stem: the main direction of growth in the plant.

stolon: a specialized, often elongated culm trailing on the ground and rooting at the nodes.



Illustrations

Rhizomes: Asa Gray, *How Plants Grow*, 1881.

Stolons: A.S. Hitchcock, *Manual of the Grasses of the U.S.*, 2nd Edit. 1950.

Spikelet: Asa Gray, *Manual of Botany*, 6th Edit. 1890.